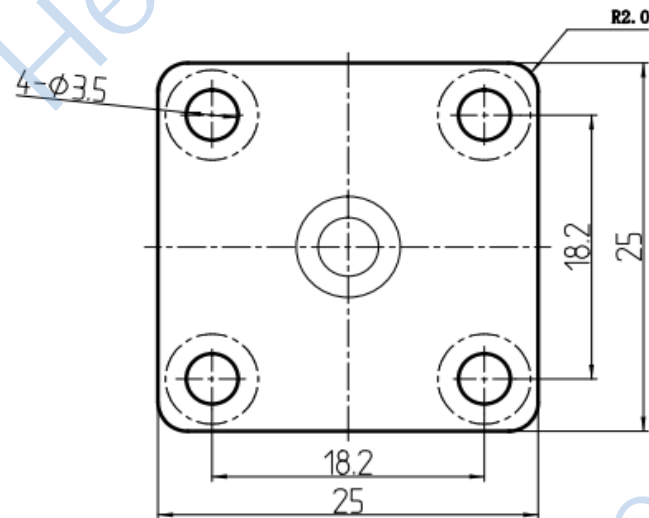
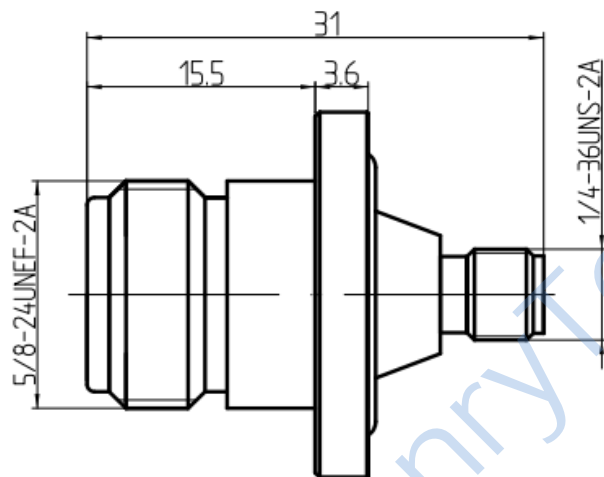


This document contains proprietary information and such information may not be disclosed to others for any purposes, not used for sales/marketing/procurement purposes without written permission

REV	DESCRIPTION OF REVISION	ECN NO.	BY	DATE	APPROVED
A	Initial Release		H.wei	19/03/17	19/03/17



- 1 Electrical
- |                                     |                    |
|-------------------------------------|--------------------|
| 1.1 Impedance                       | 50 $\Omega$        |
| 1.2 Frequency                       | 0~11GHz            |
| 1.3 Dielectric withstanding voltage | 1000V(volts RMS)   |
| 1.4 Center contact resistance       | $\leq 3M\Omega$    |
| 1.5 Outer contact resistance        | $\leq 2M\Omega$    |
| 1.6 Insulation resistance:          | $\geq 5000M\Omega$ |

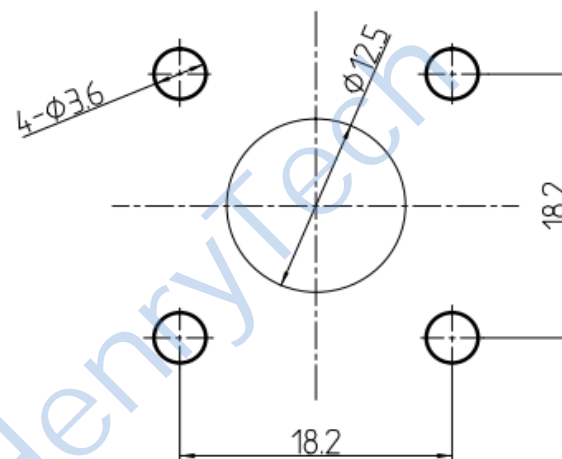
- 2 Environmental&Mechanical
- |                       |             |
|-----------------------|-------------|
| 2.1 Temperature range | -55℃~85℃    |
| 2.2 RoHs Compliant    |             |
| 2.3 Durability        | >500 cycles |


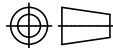
- 3 Materials&plating
- |                  |                              |
|------------------|------------------------------|
| 3.1 Body:        | Brass, nickel plated         |
| 3.2 Insulator:   | Teflon                       |
| 3.3 Contact Pin: | Phosphor Bronze, Gold plated |
| 3.4 Gasket:      | Silicon Rubber               |

#### Notes:

- ALL SPECIFICATIONS ARE SUBJECT TO CHANGE NOTICE AT ANY TIME
- CUSTOMER OUTLINE DRAWING FOR REFERENCE ONLY

#### Mounting Hole



DRAWN: H.wei 19/03/17	TITLE: RF Adaptor N Female to SMA Female Flange				
ENGINEER: L.yu 19/03/17					
APPROVED: W.yi 19/03/17		 DIMENSION IN MILLIMETERS (mm)			
TOLERANCES UNLESS OTHERWISE SPECIFIED X $\pm 0.50$ .X $\pm 0.20$ .XX $\pm 0.10$ ANGLES $\pm 1^\circ$	PART NO: HL-N-SMA-KFK1A	SIZE: A4	SCALE: N/A	SHEET: 1/1	REV: A